



Your Employer doesn't offer a Matching Gift Program. What Now?

That does **NOT** mean your employer won't match your charitable contribution!! Many organizations are happy to support their employees' philanthropic activities and grateful for the opportunity to give back to their communities!

All you need to do is ASK!

A few suggestions on how to go about securing a matching gift from your employer:

1. Put together an information packet to make it easy for them to support you! Include the following:
 - a. **Cover Letter that includes:**
 - i. Information about the annual RAKC and its success in raising more than \$800,000 to fund pediatric cancer research.
 - ii. The amount of your personal donation to The Morgan Adams Foundation and a request for a matching donation.
 - iii. Include a link to the Employer Match donation page to simplify donating.
 - iv. Provide a timeline/deadline so they know when they need to act.
 - b. **The Morgan Adams Foundation one-pager:** Provides proof of MAF's 501(c)(3) status and provides the MAF website url for more information.
2. Schedule a meeting with your management to talk about the opportunity and your request for a matching gift.

Want to kick it up a notch? Make your fundraising efforts a fun, office-wide challenge and ask your employer to match all employees' donations to The Morgan Adams Foundation!

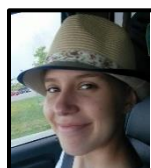
It's simple. For the sake of all the Cancer Warriors, please ASK!



Jordan



Jamin



Meredith



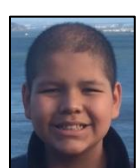
Trevor



Tayler



Koby



Gabe